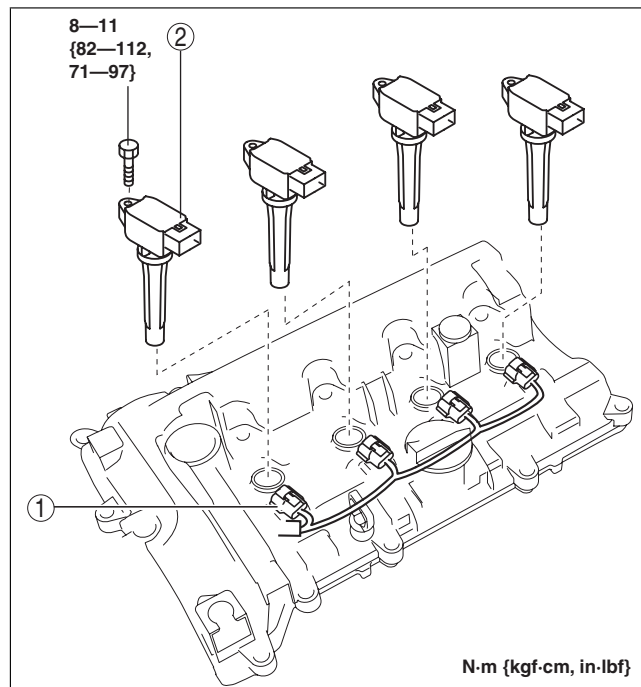


## IGNITION COIL/ION SENSOR REMOVAL/INSTALLATION [SKYACTIV-G 2.0]

id0118h6811200

1. Disconnect the negative battery cable. (See NEGATIVE BATTERY CABLE DISCONNECTION/ CONNECTION.)
2. Remove the plug hole plate. (See PLUG HOLE PLATE REMOVAL/INSTALLATION [SKYACTIV-G 2.0].)
3. Remove in the order indicated in the table.
4. Install in the reverse order of removal.

1	Connector
2	Ignition coil/ion sensor



am6zzw00010252